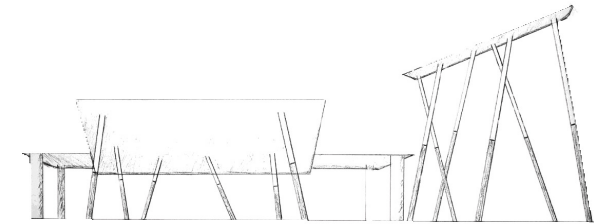
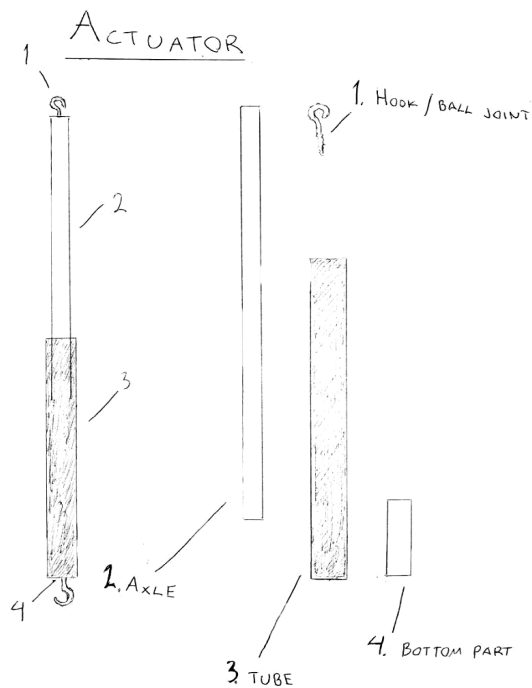


How does it work?

It's quite simple. Each platform is connected to ground with six extendable legs. All six legs have ball joints in order to achieve unlimited freedom of movement and can twist in any direction. Legs and platforms can be made from almost any material.

Legs can be set up in several different positions. Most of the basic positions are covered in instructions, but more advanced custom settings can be constructed for individual customers.



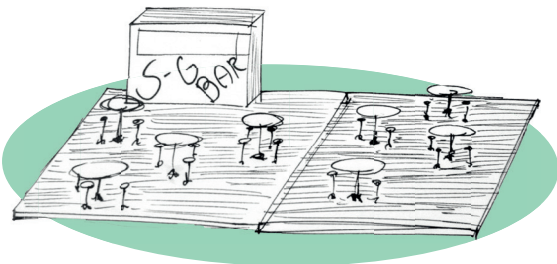
Stewart–Gough modular beer garden

ENG-AI002 - ARTS-ENG Project

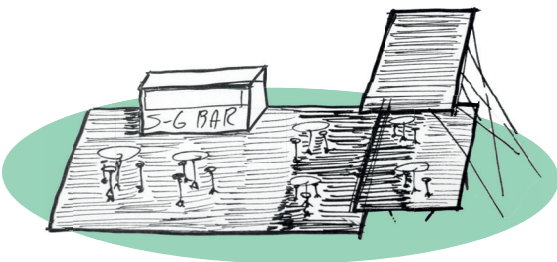
Group 18
Joona Jalava, RYM
Nick Nortamo, ENY
Tuukka Ormio, KJR
Henrika Parviainen, ENY

22.05.2019

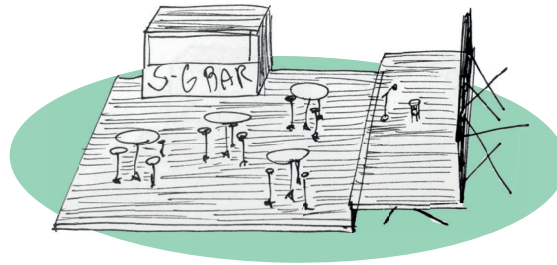
Had Stewart and Gough had a beer garden, every day would have been a good day for a drink.



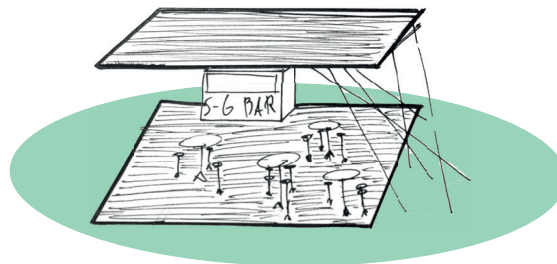
On a fair day, there would be plenty of space for everyone.



On most scorching summer days, parts of the garden can be covered from the sun.



Off-season the extra space could be utilised as a stage or film screen to attract more customers.



During cold and rainy october, floor can be turned into a roof and heat lamps give warmth to all the customers below.



Closed for winter? No way! Just pack it all up and it's a cozy little bar.

Instead of being an ordinary bar terrace, Stewart–Gough modular beer garden challenges the concept of usually flat open-air bars. Utilizing the fact that every 3-dimensional shape consists of 2-dimensional forms, it achieves huge variety of forms with playful use of flat terrace plates. Every plate is connected to ground with six spherical hinges and telescopic legs thus achieving full 6 degrees of freedom.

Only limit is your imagination.

How would you use it?