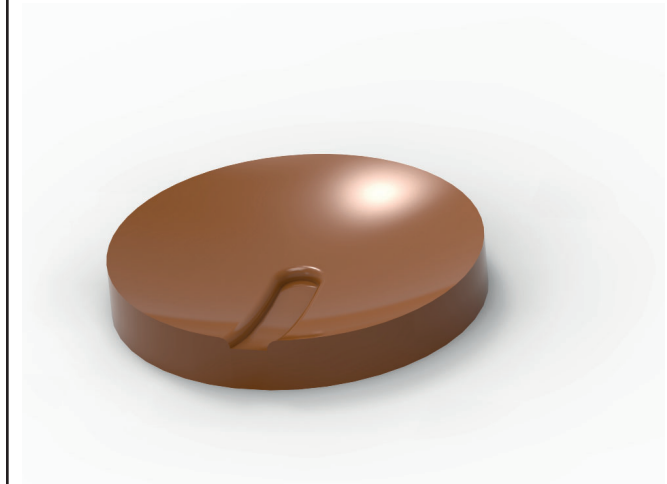


# PROJECT RAINCATCHER

After studying different options how to use Stewart-Gough platform in our project we ended up with an idea about rain-collecting roof structure. As a moving element the structure uses a spring that enables roof to shift and pour water to collecting tank underneath it.



Picture of the disc showing also the engraving that directs water to right direction



Structure is connected with rods which are attached to spherical hinges. Rods and hinges are made of steel. To enable movement one rod is replaced with a spring.

28.05.2019

ENG-A1002 - ARTS-ENG Project

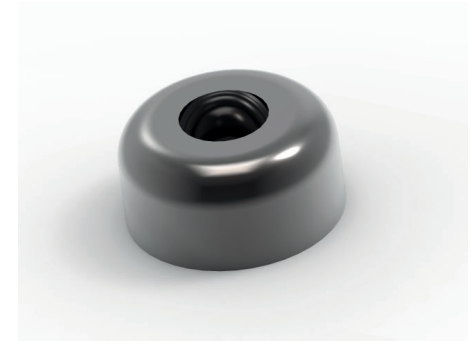
Group 33

Lotta Tammela	ENG/ENY
Joonatan Mustonen	ENG/ENY
Elmeri Solmu	ENG/KJR
Elias Ruusuvuori	ENG/KJR
Aaro Happonen	ENG/KJR



One of our first structures on  
ARTS-ENG PROJECT

With a diameter of up to 20 meters, the water collector can be used in city top of a building to collect, store and direct it to specified area. Man can easily walk under the device and only the springside of the disc must be looked out for.



One of the joints that connects all the legs to  
both the disc and the platform